





## 19 GUA TEMPURUNG

One of the largest limestone caves in Peninsular Malaysia, its chamber is 1.9 kilometres in length and consists of five large domes with ceilings that resemble coconut shells. Once used as a base by communist terrorists around 1959.

GPS Coordinate:  
N 4° 24' 57.63384" E 101° 11' 15.66672"



## 20 TASIK RABAN

A manmade lake that resulted from the construction of the Chenderoh Dam. It is a hotspot for anglers. One of the best-known local products is fermented fish (ikan pekasam).

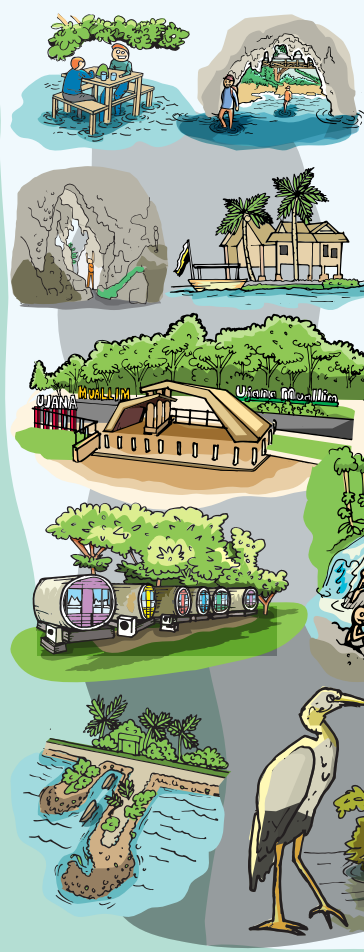
GPS Coordinate:  
N 4° 59' 49.07328" E 100° 57' 1.17108"

**PUBLICATION:**  
**TOURISM PERAK MANAGEMENT BERHAD**  
22, 22A & 22B, Jalan Teh Hawa,  
30300 Ipoh, Perak Darul Ridzuan, Malaysia  
Tel: +605-249 9966 Fax: +605-242 3388

Email : wow@tourismperakmalaysia.com  
Website : www.tourismperakmalaysia.com  
Facebook : Tourism Perak  
Twitter : Tourism Perak  
Instagram : Tourism Perak

# PERAK FUN MAP

## YOUR HOLIDAY DESTINATION



ENGLISH VERSION

## 1 IPOH RAILWAY STATION

Besides being Ipoh's major landmark, the railway station is the main terminal for inter-city rail services known as the Electric Train Service (ETS). This colonial heritage building stands majestically in front of a beautifully landscaped park within the city.

GPS Coordinate:  
N 4° 35' 49.4952" E 101° 4' 26.34996"



## 2 GUNUNG LANG

A Kinta Valley Geosite, this former tin mining site in the early 20th century has been commercialised as a popular recreational park in Ipoh.

GPS Coordinate:  
N 4° 37' 32.98944" E 101° 5' 20.3586"

## 3 LOST WORLD OF TAMBUN

A popular holiday destination for the entire family, this is Southeast Asia's largest theme park with natural hot spring pools plus an assortment of games and activities for all ages.

GPS Coordinate:  
N 4° 37' 29.424" E 101° 9' 16.668"



## 4 UBUDIAH ROYAL MOSQUE

The Ubudiah Royal Mosque is located in Bukit Chandan, Kuala Kangsar. Featuring Moorish architecture, the mosque is surrounded by four minarets and turrets topped with golden domes.

GPS Coordinate:  
N 4° 45' 50.82732" E 100° 57' 3.00852"



## 5 TAIPING LAKE GARDENS

Located between Bukit Larut (Maxwell Hill) and Taiping Zoo, the Taiping Lake Gardens is lined with shady rain trees that have become the icon of this beautiful town. The lake is a result of tin ore mining activity at one of the earliest tin mines in the country.

GPS Coordinate:  
N 4° 51' 8.95788" E 100° 44' 58.2522"



## 6 7 LATA OF SELAMA

Well known as an eco-tourism destination with a focus on leisure, the district of Selama boasts seven waterfalls: Lata Tebing Tinggi, Lata Damak, Lata Titi Dua, Lata Rambung, Lata Batu Putih, Lata Buluh and Lata Panggung. Still untouched, they are important habitats for various species of flora and fauna.

GPS Coordinate:  
N 5° 12' 22.21236" E 100° 46' 51.7278"



## 7 BAN PECAH

A serene destination located in the District of Kerian with its own mythology, Ban Pecah (Broken Bund) is famed for its sunsets and is a focal point for anglers. It is also well known for its fresh seafood.

GPS Coordinate:  
N 5° 3' 17.64252" E 100° 22' 52.46076"

## 8 SKY MIRROR

This natural gem is located in Kampung Sungai Burung, Bagan Datuk. The reflection between the sky and sea surface creates a mirror effect that inspires creative ideas in photography enthusiasts.

GPS Coordinate:  
N 3° 58' 35.3838" E 100° 42' 23.53716"



## 9 LEANING TOWER OF TELUK INTAN

A landmark of Teluk Intan since 1885, the tower leans to one side, similar to the world-famous Leaning Tower of Pisa in Italy. Also known as Menara Condong Teluk Intan, it boasts a height of 85 feet, with 110 steps.

GPS Coordinate:  
N 4° 1' 30.50292" E 101° 1' 19.34176"

## 13 UJANA MUALLIM

This recreational park in Proton City, Tanjung Malim not only offers an array of leisure activities, but it also provides accommodation via hostels and campsites for those wishing to spend the night here.

GPS Coordinate:  
N 3° 44' 22.06788" E 101° 32' 27.30408"



## 14 PANGKOR ISLAND



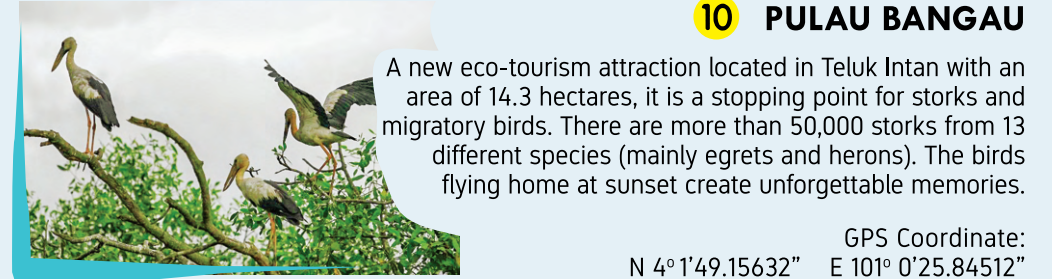
A duty-free island, it attracts millions of visitors every year. The beautiful beaches of Teluk Nipah, as well as Pulau Giam, are the primary attractions, especially on weekends. In addition to being a seafood paradise, one can explore the island's historical artifacts from the Dutch colonial period from 1842.

GPS Coordinate:  
N 4° 12' 48.53736" E 100° 34' 34.19292"

## 15 TURTLE SANCTUARY

Segari Turtle Sanctuary, a turtle conservation centre located in Pantai Panjang, Segari, is where tourists can witness the hatching of turtle eggs and participate in the release of baby turtles into the sea. Tourists can also observe turtle landing from March until July every year.

GPS Coordinate:  
N 4° 21' 46.52172" E 100° 34' 53.00544"



## 10 PULAU BANGAU

A new eco-tourism attraction located in Teluk Intan with an area of 14.3 hectares, it is a stopping point for storks and migratory birds. There are more than 50,000 storks from 13 different species (mainly egrets and herons). The birds flying home at sunset create unforgettable memories.

GPS Coordinate:  
N 4° 1' 49.15632" E 101° 0' 25.84512"

## 11 FELDA RESIDENCE HOT SPRINGS SUNGAI KLAH

A natural hot springs recreational centre located in Sungai, it offers a range of family activities with the opportunity to enjoy green nature away from the hustle and bustle of city life.

GPS Coordinate:  
N 3° 59' 52.91232" E 101° 23' 34.93284"



## 12 LATA KINJANG

Located in Chenderiang in the District of Tapah, this famous holiday destination is home to the tallest and most beautiful waterfall in Asia.

GPS Coordinate:  
N 4° 18' 8.94276" E 101° 15' 18.69408"

## 16 PERAK AGROTURISM RESORT (PATRO)

This resort combines elements of agriculture and tourism to offer a comfortable accommodation amidst diverse water and land activities to suit any holidaymaker. PATRO is located in Sungai Galah, Tanjung Tualang.

GPS Coordinate:  
N 4° 15' 16.77528" E 101° 2' 33.94248"



## 17 ROYAL BELUM

One of the oldest forest reserves in the world, The Royal Belum State Park is a natural paradise to various treasures of flora and fauna. It is also home to three species of the iconic Rafflesia flower: R. Kerrii, R. Cantelyi and R. Azlani.

GPS Coordinate:  
N 5° 33' 6.0516" E 101° 20' 49.3584"

## 18 LENGGONG VALLEY

An archaeological site that proves human existence since the Paleolithic period. The oldest human skeleton named Perak Man is estimated to be 11,000 years old and was discovered in 1990 at Gunung Gua Runtuh. UNESCO has gazetted the Archaeological Heritage of Lenggong Valley as a UNESCO World Heritage site on 2 July 2012. Apart from being known for its fermented freshwater fish product, Lata Kekabu also attracts many visitors, especially on weekends.

GPS Coordinate:  
N 5° 3' 17.18532" E 100° 58' 26.68224"

