

Introduction

Welcome to Perak! The fact that you have picked up this brochure means that you are probably a traveler about to embark on a road-trip adventure around Perak, and you're wondering how to find your way around. Good news – we're here to help.

In this brochure we only cover train and bus routes information, but if you would rather travel independently, renting a car or a motorbike is a convenient option allowing you to travel within your own schedule and pace. If you're in for a heart-pumping holiday, check out our cycling trails around Perak. If you prefer to be chauffeured in style, E-hailing apps such as "Grab" and "Uber" are increasingly popular in bigger cities with the influence of the technologically inclined generation, and hailing a taxi is slightly pricey but a sure way to get you to your destination.

Regardless of your mode of transportation, we encourage extra precautions when travelling in a foreign place for the first time. We welcome you to Perak, and hope you enjoy your stay here – in the land where stories begin!

Things to note



Although it is possible to travel by bus and train, its convenience depends on the attraction sites you plan to visit. For rural places, we would highly recommend renting a car or bike, as the journey is simpler and more time efficient.



There are three main mobile phone companies (Celcom, Digi, & Maxis), all with similar call rates and prepaid packages. We highly recommend purchasing a travel data plan, especially if you're planning road trips to more rural areas.



Be mindful of your belongings, and don't leave valuables unattended, especially your travel documents. Refrain from travelling alone after dark, and don't swing your bags around or leave phones on the table while eating, in case of snatch thefts.



When crossing the road, be wary of reckless drivers and motorcyclists who don't obey pedestrian crossings or traffic lights.



Make sure to book train, bus, or flight tickets early during school holidays and long weekends, as the tickets will sell out quickly during this time.



Tell your bus driver where you're headed to, to make sure you get to the right destination!



Service charges are already included in places such as hotels and restaurants, so extra tipping is not expected.



Keep your clothing modest, especially when visiting traditional villages or places of worship.

Emergency Contact List

Perak Police Station	999	Ipoh Ambulance	05 522 2506
Perak Police Department	05 245 1072	Perak Bomba Contact	994
Operator	05 245 1222	Ipoh – Jalan Kompleks Sultan	05 547 4444
Batu Gajah	05 366 2222	Ipoh – Simpang Pulai	05 257 4444
Gerih	05 791 2222	Ipoh – Bandar Meru Raya	05 526 4444
Teluk Intan	05 622 1222	Ipoh-Lahat	05 322 9549
Ipoh	05 245 1500	Batu Gajah	05 366 4444
Kampar	05 465 2222	Gopeng	05 359 4444
Kerian	05 721 5222	Kampar	05 466 4444
Kuala Kangsar	05 776 2222	Sungai Siput	05 598 2444
Manjung	05 688 5222	Kuala Kangsar	05 776 4444
Marin Kg Ache	05 691 2361	Taipung – Jalan Panggong Wayang	05 808 4444
Penghalan Hulu	04 4778222	Taipung – Kamunting	05 891 2322
Parit	05 377 1222	Bagan Serai	05 721 5444
Sg. Senam	05 546 4588	Parit Buntar	05 716 4444
Selama	05 839 4222	Kuala Kurau	05 727 7444
Sungai Siput	05 529 1222	Salama	05 839 4444
Taipung	05 652 8222	Lenggong	05 767 7444
Tanjung Malim	05 401 1222	Gerih	05 791 1444
Tapah	05 401 1222	Penghalan Hulu	05 477 8344
Perak General Hospital	993	Seri Manjung	05 688 4444
Hospital Slim River	05 452 6467	Sitiawan	05 691 4444
Hospital Tapah	05 401 1333	Pulau Pangkor	05 685 1144
Hospital Teluk Intan	05 621 3333	Parit Remis	05 677 1444
Hospital Gerih	05 791 1333	Parit	05 377 1444
Hospital Parit Buntar	05 716 3333	Seri Isbandar	05 371 2024
Hospital Batu Gajah	05 366 3333	Tapah	05 401 1444
Hospital Kampar	05 465 3333	Bidor	05 434 0444
Hospital Raja Permaisuri Bainun Ipoh	05 208 5000	Silim River	05 452 8444
Hospital Kuala Kangsar	05 776 3333	Tanjung Malim	05 459 6444
Hospital Sungai Siput	05 598 3333	Teluk Intan	05 622 1444
Hospital Selama	05 839 4222	Hutan Melintang	05 641 4444
Hospital Taiping	05 808 3333	Ayer Tawar	05 672 7444
Hospital Seri Manjung	05 688 1333	Batu Kurau	05 888 1844
Hospital Changkat Melintang	05 376 1333		
Hospital Bahagia Ulu Kinta	05 533 2333		

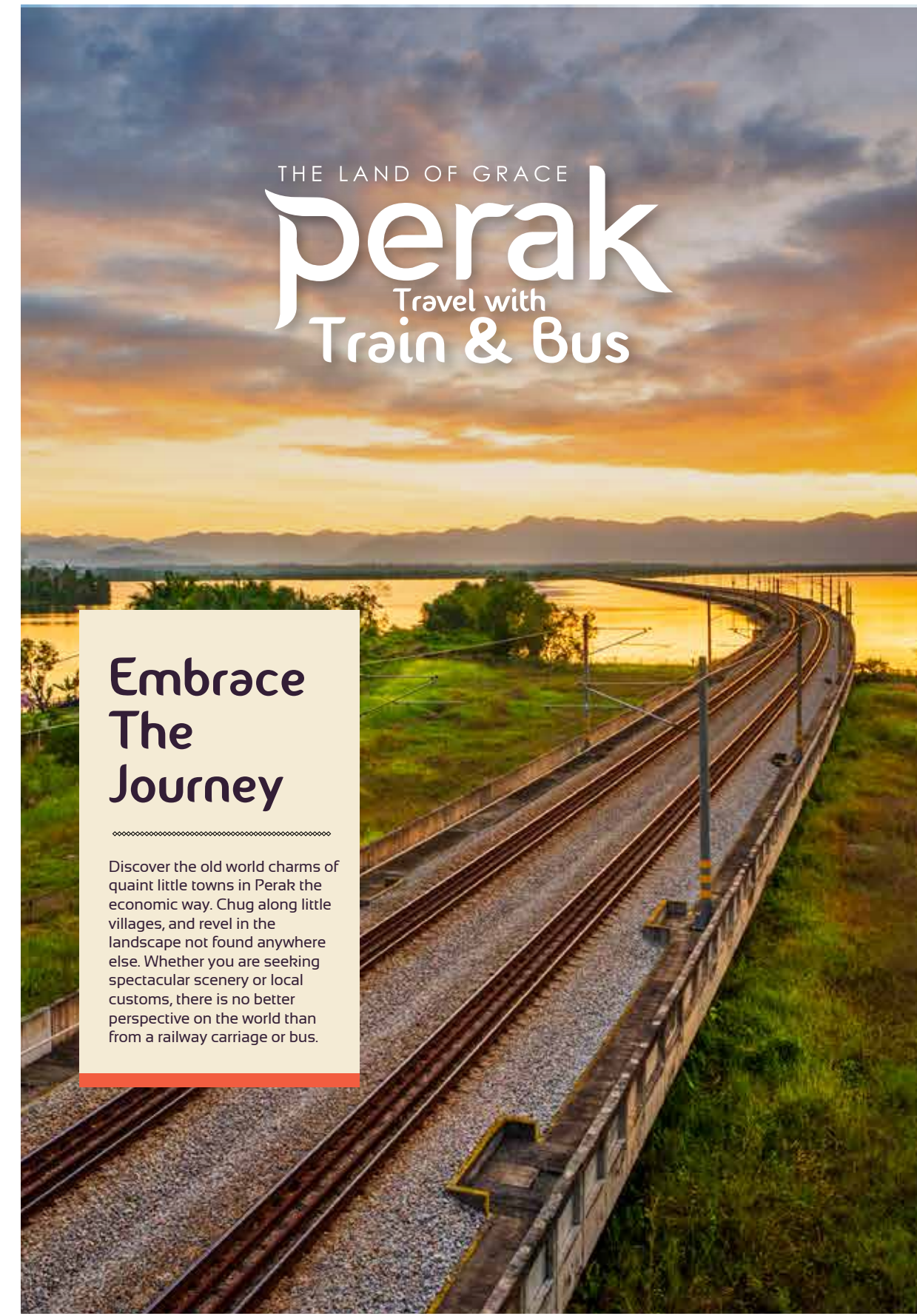
International call access code: 00
Country code – 60
Police/Ambulance – 999 or 112 from a mobile phone
Fire and Rescue department – 994 or 112 from a mobile phone
Tourism Infoline: 1300 88 5050 (from within Malaysia only)



TOURISM PERAK MANAGEMENT BERHAD
22, 22A & 22B, Jalan Teh Hwa, 30300 Ipoh, Perak
Tel | +605-249 9966 / +605-241 2372
Email | wow@tourismperakmalaysia.com
www.tourismperakmalaysia.com

Tourism Perak @PerakTourism
tourismperak 游客州微网

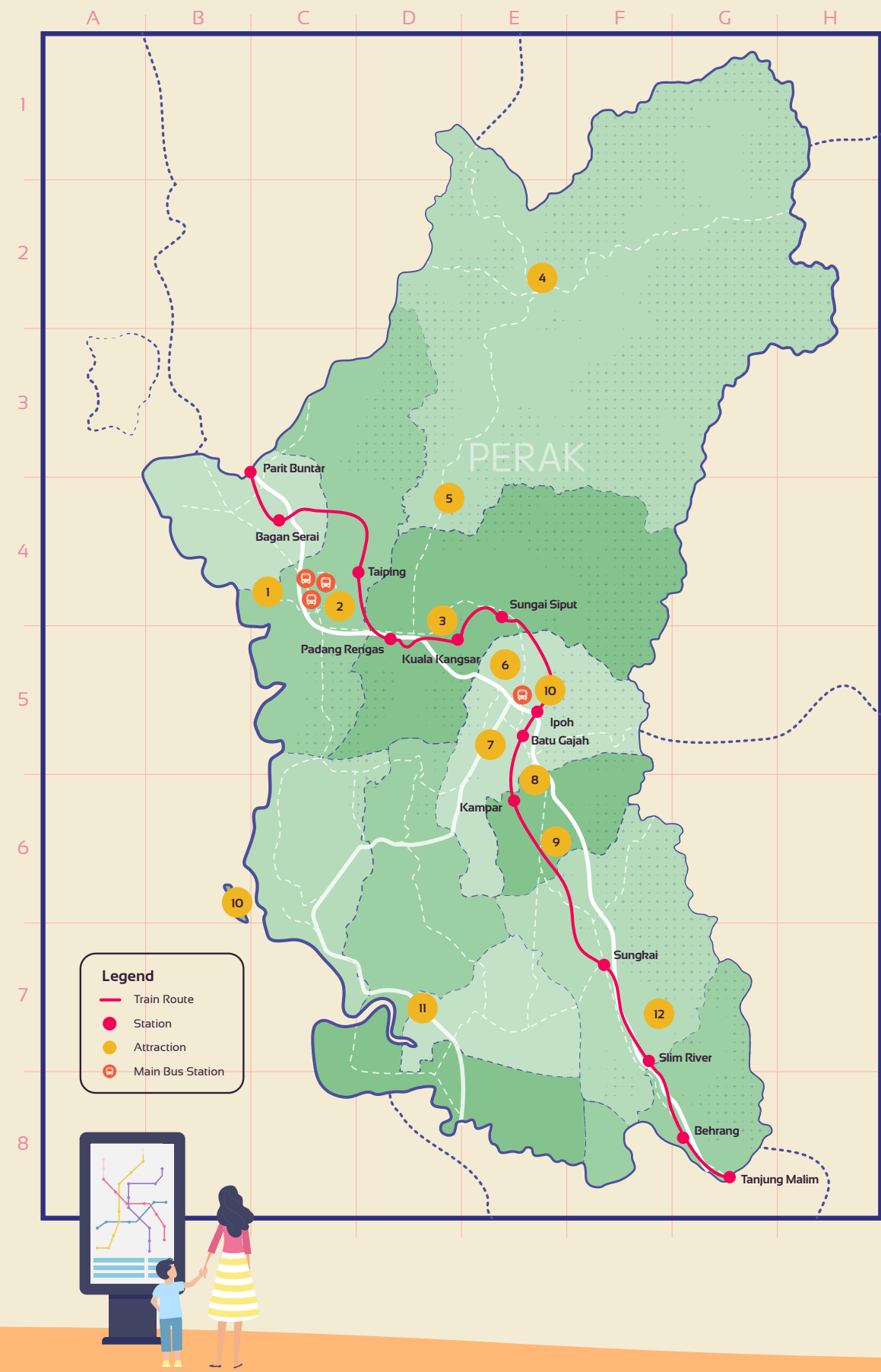
All information stated in the brochure is correct at time of printing.



THE LAND OF GRACE
perak
Travel with
Train & Bus

Embrace The Journey

Discover the old world charms of quaint little towns in Perak the economic way. Chug along little villages, and revel in the landscape not found anywhere else. Whether you are seeking spectacular scenery or local customs, there is no better perspective on the world than from a railway carriage or bus.



Attractions

1 Kuala Sepetang

A popular attraction for nature lovers – explore the wetlands and fishing villages of this coastal town, or take a boat in search of dolphins or fireflies. This haven for mangrove ecology and migratory birds is a must-see for birdwatchers and photographers.

2 Taiping (Lake Gardens, Zoo & Night Safari)

Perak's second largest town is defined by its history and greenery. On a sunny day, visiting the Taiping Lake or Taiping Zoo & Night Safari should definitely be on your list for wholesome family fun.

3 Ubudiah Mosque

One of the most beautiful Islamic Architectures found in Malaysia, the Ubudiah Mosque is a lovely display of religion and art. It is also a nearby walk from the Sultan Azlan Shah Gallery, the Istana Iskandariah, and the Perak Royal Museum!

4 Royal Belum

Cruise along the rivers of the Royal Belum and discover hidden wildlife with a guided nature tour. Dating back to more than 130 million years, Royal Belum is one of the oldest rainforests in the world.

5 Lenggong Archaeological Museum

Lenggong Valley is the oldest known site of human activity in Peninsular Malaysia. This Archaeological Museum is a treasure trove of history, with its most famous display being the Perak Man, the oldest human skeleton found in Peninsular Malaysia dating back to the Paleolithic Era.

6 Ipoh Old Town

From its unique and historical colonial buildings to upcoming heritage cafes, Ipoh is a perfect blend of reminiscent classics and modernity. Ipoh is also a heaven for foodies, rated as a world top destination to try local food and coffee.

7 Gunung Rapat

Set in Gunung Rapat are some of the oldest and largest cave temples in Malaysia, containing volumes of culture and heritage. Located just next door to each other, the three cave temples Sam Poh Tong, Ling Sen Tong and Nam Thean Tong can be visited in one trip.

8 Kellie's Castle

Kellie's Castle was built by Scottish planter William Kellie Smith as a castle of love for his wife. The castle was used as a setting of the 1999 film Anna and the King, and contains Malaysia's first elevator.

9 Gua Tempurung

Gua Tempurung, meaning "coconut shell" cave in Malay, is a must-visit for the explorer. Choose from a number of "dry" or "wet" guided tour packages, ranging from mild to extreme.

10 Pangkor Island

Pangkor Island is a tropical paradise known for its pristine beaches, underwater activities, delicious seafood cuisine, enchanting temples, and exotic wildlife. It is convenient to rent a car or bike at the island.

11 Teluk Intan

"Teluk Intan", literally translated into "Diamond Bay", is a quaint town by the riverbank. Once home to Perak Royalty, it is most well-known now for its leaning tower and colonial architecture from the past.

12 Sungai Klah Hot Spring

Nestled in the ambience of a lush and green forest that is surrounded by majestic peaks and crystal-clear mountain streams and rivers, Sungai Klah is made up of natural springs said to have healing properties that detoxify the body and cleanse the system.

Transportation:

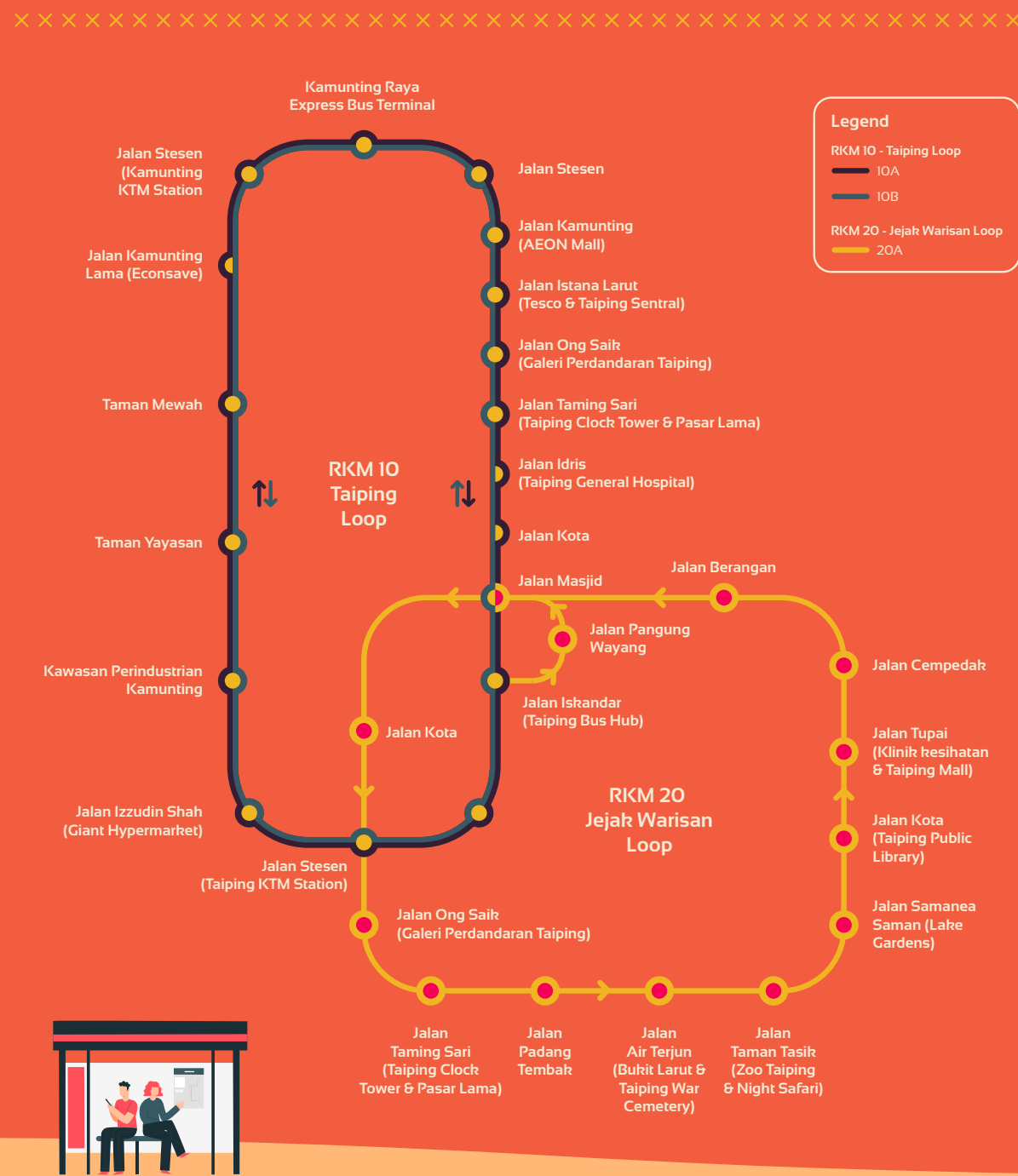
- Train to Taiping
- Bus (Blue Omnibus Route 77) to Kuala Sepetang
- Train to Taiping
- Bus by Jeti Warisan Loop 20A
- Train to Kuala Kangsar
- Bus (Perak Transit Route 99) to Lenggong
- Train to Ipoh railway station
- Walk around Old Town Sites
- Train to Ipoh railway station
- Walk to Medan Kidd Bus Station
- Bus (Perak Transit Route 46) to Seri Manjung
- Bus (Rapid K1) to Lumut Jetty
- Boat to Pangkor Island
- Train to Ipoh
- Bus (Smart Express) to Teluk Intan
- Train to Ipoh railway station
- Walk around Old Town Sites
- Bus (Perak Transit Route 136) to Batu Gajah
- Bus (Perak Transit Route 66) to Gopeng
- Bus (Perak Transit Route 67) to Batu Gajah
- Train to Ipoh railway station
- Walk to Medan Kidd Bus Station
- Bus (Perak Transit Route 66) to Coping
- Taxi to the Caves
- Train to Ipoh railway station
- Walk to Medan Kidd Bus Station
- Bus (Perak Transit Route 46) to Seri Manjung
- Bus (Rapid K1) to Lumut Jetty
- Boat to Pangkor Island
- Train to Ipoh railway station
- Walk to Medan Kidd Bus Station
- Bus (Perak Transit Route 136) to Batu Gajah
- Bus (Perak Transit Route 66) to Gopeng
- Bus (Perak Transit Route 67) to Batu Gajah
- Train to Ipoh railway station
- Walk to Medan Kidd Bus Station
- Bus (Perak Transit Route 66) to Coping
- Taxi to the Caves
- Train to Ipoh railway station
- Walk to Medan Kidd Bus Station
- Bus (Perak Transit Route 46) to Seri Manjung
- Bus (Rapid K1) to Lumut Jetty
- Boat to Pangkor Island
- Train to Ipoh railway station
- Walk to Medan Kidd Bus Station
- Bus (Perak Transit Route 136) to Batu Gajah
- Bus (Perak Transit Route 66) to Gopeng
- Bus (Perak Transit Route 67) to Batu Gajah
- Train to Ipoh railway station
- Walk to Medan Kidd Bus Station
- Bus (Perak Transit Route 66) to Coping
- Taxi to the Caves
- Train to Ipoh railway station
- Walk to Medan Kidd Bus Station
- Bus (Perak Transit Route 46) to Seri Manjung
- Bus (Rapid K1) to Lumut Jetty
- Boat to Pangkor Island
- Train to Ipoh railway station
- Walk to Medan Kidd Bus Station
- Bus (Perak Transit Route 136) to Batu Gajah
- Bus (Perak Transit Route 66) to Gopeng
- Bus (Perak Transit Route 67) to Batu Gajah
- Train to Ipoh railway station
- Walk to Medan Kidd Bus Station
- Bus (Perak Transit Route 66) to Coping
- Taxi to the Caves
- Train to Ipoh railway station
- Walk to Medan Kidd Bus Station
- Bus (Perak Transit Route 46) to Seri Manjung
- Bus (Rapid K1) to Lumut Jetty
- Boat to Pangkor Island
- Train to Ipoh railway station
- Walk to Medan Kidd Bus Station
- Bus (Perak Transit Route 136) to Batu Gajah
- Bus (Perak Transit Route 66) to Gopeng
- Bus (Perak Transit Route 67) to Batu Gajah
- Train to Ipoh railway station
- Walk to Medan Kidd Bus Station
- Bus (Perak Transit Route 66) to Coping
- Taxi to the Caves
- Train to Ipoh railway station
- Walk to Medan Kidd Bus Station
- Bus (Perak Transit Route 46) to Seri Manjung
- Bus (Rapid K1) to Lumut Jetty
- Boat to Pangkor Island
- Train to Ipoh railway station
- Walk to Medan Kidd Bus Station
- Bus (Perak Transit Route 136) to Batu Gajah
- Bus (Perak Transit Route 66) to Gopeng
- Bus (Perak Transit Route 67) to Batu Gajah
- Train to Ipoh railway station
- Walk to Medan Kidd Bus Station
- Bus (Perak Transit Route 66) to Coping
- Taxi to the Caves
- Train to Ipoh railway station
- Walk to Medan Kidd Bus Station
- Bus (Perak Transit Route 46) to Seri Manjung
- Bus (Rapid K1) to Lumut Jetty
- Boat to Pangkor Island
- Train to Ipoh railway station
- Walk to Medan Kidd Bus Station
- Bus (Perak Transit Route 136) to Batu Gajah
- Bus (Perak Transit Route 66) to Gopeng
- Bus (Perak Transit Route 67) to Batu Gajah
- Train to Ipoh railway station
- Walk to Medan Kidd Bus Station
- Bus (Perak Transit Route 66) to Coping
- Taxi to the Caves
- Train to Ipoh railway station
- Walk to Medan Kidd Bus Station
- Bus (Perak Transit Route 46) to Seri Manjung
- Bus (Rapid K1) to Lumut Jetty
- Boat to Pangkor Island
- Train to Ipoh railway station
- Walk to Medan Kidd Bus Station
- Bus (Perak Transit Route 136) to Batu Gajah
- Bus (Perak Transit Route 66) to Gopeng
- Bus (Perak Transit Route 67) to Batu Gajah
- Train to Ipoh railway station
- Walk to Medan Kidd Bus Station
- Bus (Perak Transit Route 66) to Coping
- Taxi to the Caves
- Train to Ipoh railway station
- Walk to Medan Kidd Bus Station
- Bus (Perak Transit Route 46) to Seri Manjung
- Bus (Rapid K1) to Lumut Jetty
- Boat to Pangkor Island
- Train to Ipoh railway station
- Walk to Medan Kidd Bus Station
- Bus (Perak Transit Route 136) to Batu Gajah
- Bus (Perak Transit Route 66) to Gopeng
- Bus (Perak Transit Route 67) to Batu Gajah
- Train to Ipoh railway station
- Walk to Medan Kidd Bus Station
- Bus (Perak Transit Route 66) to Coping
- Taxi to the Caves
- Train to Ipoh railway station
- Walk to Medan Kidd Bus Station
- Bus (Perak Transit Route 46) to Seri Manjung
- Bus (Rapid K1) to Lumut Jetty
- Boat to Pangkor Island
- Train to Ipoh railway station
- Walk to Medan Kidd Bus Station
- Bus (Perak Transit Route 136) to Batu Gajah
- Bus (Perak Transit Route 66) to Gopeng
- Bus (Perak Transit Route 67) to Batu Gajah
- Train to Ipoh railway station
- Walk to Medan Kidd Bus Station
- Bus (Perak Transit Route 66) to Coping
- Taxi to the Caves
- Train to Ipoh railway station
- Walk to Medan Kidd Bus Station
- Bus (Perak Transit Route 46) to Seri Manjung
- Bus (Rapid K1) to Lumut Jetty
- Boat to Pangkor Island
- Train to Ipoh railway station
- Walk to Medan Kidd Bus Station
- Bus (Perak Transit Route 136) to Batu Gajah
- Bus (Perak Transit Route 66) to Gopeng
- Bus (Perak Transit Route 67) to Batu Gajah
- Train to Ipoh railway station
- Walk to Medan Kidd Bus Station
- Bus (Perak Transit Route 66) to Coping
- Taxi to the Caves
- Train to Ipoh railway station
- Walk to Medan Kidd Bus Station
- Bus (Perak Transit Route 46) to Seri Manjung
- Bus (Rapid K1) to Lumut Jetty
- Boat to Pangkor Island
- Train to Ipoh railway station
- Walk to Medan Kidd Bus Station
- Bus (Perak Transit Route 136) to Batu Gajah
- Bus (Perak Transit Route 66) to Gopeng
- Bus (Perak Transit Route 67) to Batu Gajah
- Train to Ipoh railway station
- Walk to Medan Kidd Bus Station
- Bus (Perak Transit Route 66) to Coping
- Taxi to the Caves
- Train to Ipoh railway station
- Walk to Medan Kidd Bus Station
- Bus (Perak Transit Route 46) to Seri Manjung
- Bus (Rapid K1) to Lumut Jetty
- Boat to Pangkor Island
- Train to Ipoh railway station
- Walk to Medan Kidd Bus Station
- Bus (Perak Transit Route 136) to Batu Gajah
- Bus (Perak Transit Route 66) to Gopeng
- Bus (Perak Transit Route 67) to Batu Gajah
- Train to Ipoh railway station
- Walk to Medan Kidd Bus Station
- Bus (Perak Transit Route 66) to Coping
- Taxi to the Caves
- Train to Ipoh railway station
- Walk to Medan Kidd Bus Station
- Bus (Perak Transit Route 46) to Seri Manjung
- Bus (Rapid K1) to Lumut Jetty
- Boat to Pangkor Island
- Train to Ipoh railway station
- Walk to Medan Kidd Bus Station
- Bus (Perak Transit Route 136) to Batu Gajah
- Bus (Perak Transit Route 66) to Gopeng
- Bus (Perak Transit Route 67) to Batu Gajah
- Train to Ipoh railway station
- Walk to Medan Kidd Bus Station
- Bus (Perak Transit Route 66) to Coping
- Taxi to the Caves
- Train to Ipoh railway station
- Walk to Medan Kidd Bus Station
- Bus (Perak Transit Route 46) to Seri Manjung
- Bus (Rapid K1) to Lumut Jetty
- Boat to Pangkor Island
- Train to Ipoh railway station
- Walk to Medan Kidd Bus Station
- Bus (Perak Transit Route 136) to Batu Gajah
- Bus (Perak Transit Route 66) to Gopeng
- Bus (Perak Transit Route 67) to Batu Gajah
- Train to Ipoh railway station
- Walk to Medan Kidd Bus Station
- Bus (Perak Transit Route 66) to Coping
- Taxi to the Caves
- Train to Ipoh railway station
- Walk to Medan Kidd Bus Station
- Bus (Perak Transit Route 46) to Seri Manjung
- Bus (Rapid K1) to Lumut Jetty
- Boat to Pangkor Island
- Train to Ipoh railway station
- Walk to Medan Kidd Bus Station
- Bus (Perak Transit Route 136) to Batu Gajah
- Bus (Perak Transit Route 66) to Gopeng
- Bus (Perak Transit Route 67) to Batu Gajah
- Train to Ipoh railway station
- Walk to Medan Kidd Bus Station
- Bus (Perak Transit Route 66) to Coping
- Taxi to the Caves
- Train to Ipoh railway station
- Walk to Medan Kidd Bus Station
- Bus (Perak Transit Route 46) to Seri Manjung
- Bus (Rapid K1) to Lumut Jetty
- Boat to Pangkor Island
- Train to Ipoh railway station
- Walk to Medan Kidd Bus Station
- Bus (Perak Transit Route 136) to Batu Gajah
- Bus (Perak Transit Route 66) to Gopeng
- Bus (Perak Transit Route 67) to Batu Gajah
- Train to Ipoh railway station
- Walk to Medan Kidd Bus Station
- Bus (Perak Transit Route 66) to Coping
- Taxi to the Caves
- Train to Ipoh railway station
- Walk to Medan Kidd Bus Station
- Bus (Perak Transit Route 46) to Seri Manjung
- Bus (Rapid K1) to Lumut Jetty
- Boat to Pangkor Island
- Train to Ipoh railway station
- Walk to Medan Kidd Bus Station
- Bus (Perak Transit Route 136) to Batu Gajah
- Bus (Perak Transit Route 66) to Gopeng
- Bus (Perak Transit Route 67) to Batu Gajah
- Train to Ipoh railway station
- Walk to Medan Kidd Bus Station
- Bus (Perak Transit Route 66) to Coping
- Taxi to the Caves
- Train to Ipoh railway station
- Walk to Medan Kidd Bus Station
- Bus (Perak Transit Route 46) to Seri Manjung
- Bus (Rapid K1) to Lumut Jetty
- Boat to Pangkor Island
- Train to Ipoh railway station
- Walk to Medan Kidd Bus Station
- Bus (Perak Transit Route 136) to Batu Gajah
- Bus (Perak Transit Route 66) to Gopeng
- Bus (Perak Transit Route 67) to Batu Gajah
- Train to Ipoh railway station
- Walk to Medan Kidd Bus Station
- Bus (Perak Transit Route 66) to Coping
- Taxi to the Caves
- Train to Ipoh railway station
- Walk to Medan Kidd Bus Station
- Bus (Perak Transit Route 46) to Seri Manjung
- Bus (Rapid K1) to Lumut Jetty
- Boat to Pangkor Island
- Train to Ipoh railway station
- Walk to Medan Kidd Bus Station
- Bus (Perak Transit Route 136) to Batu Gajah
- Bus (Perak Transit Route 66) to Gopeng
- Bus (Perak Transit Route 67) to Batu Gajah
- Train to Ipoh railway station
- Walk to Medan Kidd Bus Station
- Bus (Perak Transit Route 66) to Coping
- Taxi to the Caves
- Train to Ipoh railway station
- Walk to Medan Kidd Bus Station
- Bus (Perak Transit Route 46) to Seri Manjung
- Bus (Rapid K1) to Lumut Jetty
- Boat to Pangkor Island
- Train to Ipoh railway station
- Walk to Medan Kidd Bus Station
- Bus (Perak Transit Route 136) to Batu Gajah
- Bus (Perak Transit Route 66) to Gopeng
- Bus (Perak Transit Route 67) to Batu Gajah
- Train to Ipoh railway station
- Walk to Medan Kidd Bus Station
- Bus (Perak Transit Route 66) to Coping
- Taxi to the Caves
- Train to Ipoh railway station
- Walk to Medan Kidd Bus Station
- Bus (Perak Transit Route 46) to Seri Manjung
- Bus (Rapid K1) to Lumut Jetty
- Boat to Pangkor Island
- Train to Ipoh railway station
- Walk to Medan Kidd Bus Station
- Bus (Perak Transit Route 136) to Batu Gajah
- Bus (Perak Transit Route 66) to Gopeng
- Bus (Perak Transit Route 67) to Batu Gajah
- Train to Ipoh railway station
- Walk to Medan Kidd Bus Station
- Bus (Perak Transit Route 66) to Coping
- Taxi to the Caves
- Train to Ipoh railway station
- Walk to Medan Kidd Bus Station
- Bus (Perak Transit Route 46) to Seri Manjung
- Bus (Rapid K1) to Lumut Jetty
- Boat to Pangkor Island
- Train to Ipoh railway station
- Walk to Medan Kidd Bus Station
- Bus (Perak Transit Route 136) to Batu Gajah
- Bus (Perak Transit Route 66) to Gopeng
- Bus (Perak Transit Route 67) to Batu Gajah
- Train to Ipoh railway station
- Walk to Medan Kidd Bus Station
- Bus (Perak Transit Route 66) to Coping
- Taxi to the Caves
- Train to Ipoh railway station
- Walk to Medan Kidd Bus Station
- Bus (Perak Transit Route 46) to Seri Manjung
- Bus (Rapid K1) to Lumut Jetty
- Boat to Pangkor Island
- Train to Ipoh railway station
- Walk to Medan Kidd Bus Station
- Bus (Perak Transit Route 136) to Batu Gajah
- Bus (Perak Transit Route 66) to Gopeng
- Bus (Perak Transit Route 67) to Batu Gajah
- Train to Ipoh railway station
- Walk to Medan Kidd Bus Station
- Bus (Perak Transit Route 66) to Coping
- Taxi to the Caves
- Train to Ipoh railway station
- Walk to Medan Kidd Bus Station
- Bus (Perak Transit Route 46) to Seri Manjung
- Bus (Rapid K1) to Lumut Jetty
- Boat to Pangkor Island
- Train to Ipoh railway station
- Walk to Medan Kidd Bus Station
- Bus (Perak Transit Route 136) to Batu Gajah
- Bus (Perak Transit Route 66) to Gopeng
- Bus (Perak Transit Route 67) to Batu Gajah
- Train to Ipoh railway station
- Walk to Medan Kidd Bus Station
- Bus (Perak Transit Route 66) to Coping
- Taxi to the Caves
- Train to Ipoh railway station
- Walk to Medan Kidd Bus Station
- Bus (Perak Transit Route 46) to Seri Manjung
- Bus (Rapid K1) to Lumut Jetty
- Boat to Pangkor Island
- Train to Ipoh railway station
- Walk to Medan Kidd Bus Station
- Bus (Perak Transit Route 136) to Batu Gajah
- Bus (Perak Transit Route 66) to Gopeng
- Bus (Perak Transit Route 67) to Batu Gajah
- Train to Ipoh railway station
- Walk to Medan Kidd Bus Station
- Bus (Perak Transit Route 66) to Coping
- Taxi to the Caves
- Train to Ipoh railway station
- Walk to Medan Kidd Bus Station
- Bus (Perak Transit Route 46) to Seri Manjung
- Bus (Rapid K1) to Lumut Jetty
- Boat to Pangkor Island
- Train to Ipoh railway station
- Walk to Medan Kidd Bus Station
- Bus (Perak Transit Route 136) to Batu Gajah
- Bus (Perak Transit Route 66) to Gopeng
- Bus (Perak Transit Route 67) to Batu Gajah
- Train to Ipoh railway station
- Walk to Medan Kidd Bus Station
- Bus (Perak Transit Route 66) to Coping
- Taxi to the Caves
- Train to Ipoh railway station
- Walk to Medan Kidd Bus Station
- Bus (Perak Transit Route 46) to Seri Manjung
- Bus (Rapid K1) to Lumut Jetty
- Boat to Pangkor Island
- Train to Ipoh railway station
- Walk to Medan Kidd Bus Station
- Bus (Perak Transit Route 136) to Batu Gajah
- Bus (Perak Transit Route 66) to Gopeng
- Bus (Perak Transit Route 67) to Batu Gajah
- Train to Ipoh railway station
- Walk to Medan Kidd Bus Station
- Bus (Perak Transit Route 66) to Coping
- Taxi to the Caves
- Train to Ipoh railway station
- Walk to Medan Kidd Bus Station
- Bus (Perak Transit Route 46) to Seri Manjung
- Bus (Rapid K1) to Lumut Jetty
- Boat to Pangkor Island
- Train to Ipoh railway station
- Walk to Medan Kidd Bus Station
- Bus (Perak Transit Route 136) to Batu Gajah
- Bus (Perak Transit Route 66) to Gopeng
- Bus (Perak Transit Route 67) to Batu Gajah
- Train to Ipoh railway station
- Walk to Medan Kidd Bus Station
- Bus (Perak Transit Route 66) to Coping
- Taxi to the Caves
- Train to Ipoh railway station
- Walk to Medan Kidd Bus Station
- Bus (Perak Transit Route 46) to Seri Manjung
- Bus (Rapid K1) to Lumut Jetty
- Boat to Pangkor Island
- Train to Ipoh railway station
- Walk to Medan Kidd Bus Station
- Bus (Perak Transit Route 136) to Batu Gajah
- Bus (Perak Transit Route 66) to Gopeng
- Bus (Perak Transit Route 67) to Batu Gajah
- Train to Ipoh railway station
- Walk to Medan Kidd Bus Station
- Bus (Perak Transit Route 66) to Coping
- Taxi to the Caves
- Train to Ipoh railway station
- Walk to Medan Kidd Bus Station
- Bus (Perak Transit Route 46) to Seri Manjung
- Bus (Rapid K1) to Lumut Jetty
- Boat to Pangkor Island
- Train to Ipoh railway station
- Walk to Medan Kidd Bus Station
- Bus (Perak Transit Route 136) to Batu Gajah
- Bus (Perak Transit Route 66) to Gopeng
- Bus (Perak Transit Route 67) to Batu Gajah
- Train to Ipoh railway station
- Walk to Medan Kidd Bus Station
- Bus (Perak Transit Route 66) to Coping
- Taxi to the Caves
- Train to Ipoh railway station
- Walk to Medan Kidd Bus Station
- Bus (Perak Transit Route 46) to Seri Manjung
- Bus (Rapid K1) to Lumut Jetty
- Boat to Pangkor Island
- Train to Ipoh railway station
- Walk to Medan Kidd Bus Station
- Bus (Perak Transit Route 136) to Batu Gajah
- Bus (Perak Transit Route 66) to Gopeng
- Bus (Perak Transit Route 67) to Batu Gajah
- Train to Ipoh railway station
- Walk to Medan Kidd Bus Station
- Bus (Perak Transit Route 66) to Coping
- Taxi to the Caves
- Train to Ipoh railway station
- Walk to Medan Kidd Bus Station
- Bus (Perak Transit Route 46) to Seri Manjung
- Bus (Rapid K1) to Lumut Jetty
- Boat to Pangkor Island
- Train to Ipoh railway station
- Walk to Medan Kidd Bus Station
- Bus (Perak Transit Route 136) to Batu Gajah
- Bus (Perak Transit Route 66) to Gopeng
- Bus (Perak Transit Route 67) to Batu Gajah
- Train to Ipoh railway station
- Walk to Medan Kidd Bus Station
- Bus (Perak Transit Route 66) to Coping
- Taxi to the Caves
- Train to Ipoh railway station

Taiping Bus Route

Rapid Bus offers 2 loops around Taiping, as shown. The Taiping Loop serves Kamunting industrial and residential areas, such as Taman Mewah and Taman Yayasan. This service begins at Kamunting Raya Express Bus Terminal, running clockwise and counter-clockwise loops.

The Jejak Warisan Loop runs along Taiping's well-known attractions and heritage areas. Catch the bus from Jalan Ishtandar and visit sites such as the Maxwell Hill, Taiping Zoo and Taiping Lake Gardens. Both Loops begin their services at 6am from their respective hubs, ending at 10pm daily.

<http://www.rapidbg.com.my/rapid-services/routes-information/>



Ipoh Bus Route

Travelling by bus is the most affordable way to get around Perak. The most convenient cities to travel within by bus are currently Ipoh and Taiping. Perak Transit offers various routes around Ipoh from the Medan Kidd Bus Station, located next to the Railway Station. Ipoh also has a weekend tourist "Hop-On, Hop-Off" guided tour bus concept.

>>>>>>



LALUAN myBAS

No. Laluan	Nama Laluan	Waktu Perkhidmatan Isnin - Ahad		No. Laluan	Nama Laluan	Waktu Perkhidmatan Isnin - Ahad		No. Laluan	Nama Laluan	Waktu Perkhidmatan Sabtu - Ahad	
		Bes Pertama	Bes Terakhir			Bes Pertama	Bes Terakhir			Bes Pertama	Bes Terakhir
T30a	Medan Kidd - Terminal Meru Raya Terminal Meru Raya - Medan Kidd	0600	2100	T35	Medan Kidd - Terminal Meru Raya Terminal Meru Raya - Medan Kidd	0600	2100	35	Stesen Bas Medan Kidd - Stesen Bas K-Kangsar Stesen Bas K-Kangsar - Stesen Bas Medan Kidd	0600	2030
T30b	Medan Kidd - Terminal Meru Raya - Chemor Chemor - Terminal Meru Raya - Medan Kidd	0630	2130	T36	Medan Kidd - Terminal Meru Raya - Chemor Chemor - Terminal Meru Raya - Medan Kidd	0630	2130	37	Stesen Bas Medan Kidd - Tg. Tualang Tg. Tualang - Stesen Bas Medan Kidd	0700	1900
T31a	Medan Kidd - Tasek - Chemor Chemor - Tasek - Medan Kidd	0610	2010	T37	Medan Kidd - Tasek - Chemor Chemor - Tasek - Medan Kidd	0610	2010	39	Stesen Bas Medan Kidd - Parit - Benuas Benuas - Parit - Stesen Bas Medan Kidd	0630	1830
T31b	Medan Kidd - Maxwell - Tasek - Chemor Chemor - Tasek - Maxwell - Medan Kidd	0710	2110	F100	Medan Kidd - Maxwell - Tasek - Chemor Chemor - Tasek - Maxwell - Medan Kidd	0710	2110	46	Stesen Bas Medan Kidd - Seri Manjung Seri Manjung - Stesen Bas Medan Kidd	0600	1930
T32	Medan Kidd - Bercham - T. Rambutan T. Rambutan - Bercham - Medan Kidd	0605	2105	F100a	Medan Kidd - Bercham - T. Rambutan T. Rambutan - Bercham - Medan Kidd	0605	2105	47	Stesen Bas Medan Kidd - Kg. Bali Kg. Bali - Stesen Bas Medan Kidd	0630	1830
T33a	Medan Kidd - Tambun - T. Rambutan - Chemor Chemor - T. Rambutan - Tambun - Medan Kidd	0540	1940	F100b	Medan Kidd - Tambun - T. Rambutan - Chemor Chemor - T. Rambutan - Tambun - Medan Kidd	0540	1940	68	Stesen Bas Medan Kidd - Terminal 1 @ Kampar Terminal 1 @ Kampar - Stesen Bas Medan Kidd	0600	2030
T33b	Medan Kidd - Tambun - T. Rambutan T. Rambutan - Tambun - Medan Kidd	0700	2100	F102	Medan Kidd - Tambun - T. Rambutan T. Rambutan - Tambun - Medan Kidd	0700	2100	99a	Kuala Kangsar - Lenggong - Gerik Gerik - Lenggong - Kuala Kangsar	0600	1730
T34	Medan Kidd - Taiva - Gopeng Gopeng - Taiva - Medan Kidd	0615	2115	F103	Medan Kidd - Taiva - Gopeng Gopeng - Taiva - Medan Kidd	0615	2115				

LALUAN PERKHIDMATAN BAS BERHENTI-HENTI

No. Laluan	Nama Laluan	Waktu Perkhidmatan Isnin - Ahad		No. Laluan	Nama Laluan	Waktu Perkhidmatan Isnin - Ahad		No. Laluan	Nama Laluan	Waktu Perkhidmatan Isnin - Ahad		Waktu Perkhidmatan Isnin - Jumaat		Hujung Minggu/ Cuti Sekolah/ Cuti Umum	
		Bes Pertama	Bes Terakhir			Bes Pertama	Bes Terakhir			Bes Pertama	Bes Terakhir	Bes Pertama	Bes Terakhir	Bes Pertama	Bes Terakhir
35	Stesen Bas Medan Kidd - Stesen Bas K-Kangsar Stesen Bas K-Kangsar - Stesen Bas Medan Kidd	0600	2030	67	Gopeng - Batu Gajah Batu Gajah - Gopeng	0630	1830								
37	Stesen Bas Medan Kidd - Tg. Tualang Tg. Tualang - Stesen Bas Medan Kidd	0700	1900	68	Gopeng - Laman Kuala Baru - Kota Bharu Kota Bharu - Laman Kuala Baru - Gopeng	1100	1530	1100	1730	1130	1800				
39	Stesen Bas Medan Kidd - Parit - Benuas Benuas - Parit - Stesen Bas Medan Kidd	0630	1830	69	Kampar - Malim Nawar Malim Nawar - Kampar	0600	1900			0635	1935				
46	Stesen Bas Medan Kidd - Seri Manjung Seri Manjung - Stesen Bas Medan Kidd	0600	1930	70	Kampar - Sahom Sahom - Kampar			0540	1740	0620	1820	0600	1800	0830	1830
47	Stesen Bas Medan Kidd - Kg. Bali Kg. Bali - Stesen Bas Medan Kidd	0630	1830	99	Kuala Kangsar - Lenggong Lenggong - Kuala Kangsar	0600	1830			0600	1815			0700	1930
68	Stesen Bas Medan Kidd - Terminal 1 @ Kampar Terminal 1 @ Kampar - Stesen Bas Medan Kidd	0600	2030			0600	1730			0630	1730			0700	1730



Train Route

>>>>>>

Railway services have recently upgraded to a new system of electrified trains that run through Peninsular Malaysia. Travelers to and around Perak can travel routes under ETS (Electric Train Service) or KTM Intercity. The trains pass through Taiping, Kuala Kangsar, and Ipoh, making it relatively easy to travel to attractions within close proximity from these stations.

An option to travel to Perak is from Penang towards Kuala Lumpur, or vice versa. From the Pearl of the Orient (Georgetown) towards Perak, you can take a bus or ferry over the bridge to Penang Sentral in Butterworth - a central station for buses, ferries, and trains. If you stop at Ipoh, you'll arrive right in the Old Town amidst the heritage trail, in the Ipoh Railway Station. This station was built in 1935, and is one of the most beautiful railway stations in Malaysia. From Ipoh, it only takes another 2 hours and 40 minutes by the ETS train towards KL Sentral. The only drawback is that train tickets are limited, and often sell out during festive seasons or weekends. Booking online in advance is advisable for travelling by train.

KTM ETS has three coach classes for passengers to choose from:

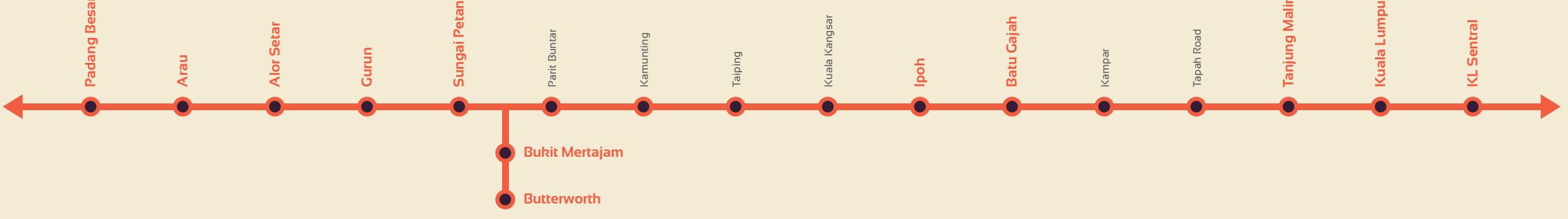
- ETS Platinum
- ETS Gold
- Business Class

The only difference between ETS Platinum and Gold are the ticket prices, number of stops, and departure times. Platinum coaches make lesser stops, and is more expensive, whereas Gold coaches stop at most stations listed. Business class coaches offer a luxury travel option for comfort and onboard entertainment.

KTM ETS Route



KTM Intercity Route



Hop On, Hop Off Bus Route

Perak's new "Hop-on Hop-off" bus concept features 2 routes around Ipoh, offering unlimited rides for the day and an on-board tour-guide that will educate and inform you about passing sights. Only available on Saturdays and Sundays.

